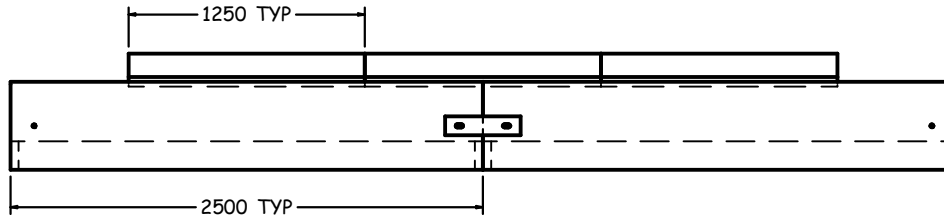


FRONT VIEW



SIDE VIEW

## LIGHT RAIL COMMUTER TRAIN TRENCH

### SPECIFICATIONS

ALL DIMENSIONS IN MILLIMETRES.

#### CONCRETE:

45 MPa @ 28 DAYS,  
5-8% AIR ENTRAINMENT IN ACCORDANCE  
WITH CSA A23.1 MOD-M90.  
EXPOSURE CLASS S1 (OR EQUIVALENT AS PER CSA A23.1).

#### REINFORCING:

IN ACCORDANCE WITH CSA G30.18 & OPSS 1440.  
ALL REINFORCING STEEL SHALL BE GRADE 400W  
WITH 40±10mm COVER.

#### WEIGHT:

TRENCH	-1046 KG
LID	-340 KG

#### NOTES:

PRODUCT DESIGNED FOR POINT LOADING AT CENTRE  
OF 71 kN (16 Kips).

MANUFACTURED IN ACCORDANCE WITH OPSS 1351.

ASSUMES TOP IS FLUSH WITH GRADE.

TRENCH DESIGNED TO BEAR ON ROCK OR CONCRETE.  
WHEN BEARING ON ROCK OR CONCRETE,  
GRANULAR BEDDING IS TO BE INSTALLED ON LIFTS  
OF NO MORE THAT 300mm THICK AND NO MORE THAN  
900mm TOTAL HEIGHT AND COMPACTED TO 95%<sub>s</sub>pmdd.

FIRE RATING = 1 HOUR.



1645 SYDENHAM RD.  
KINGSTON, ONT.

PHONE:  
(800) 223-0012  
1-613-546-6683

[www.anchorconcrete.com](http://www.anchorconcrete.com)