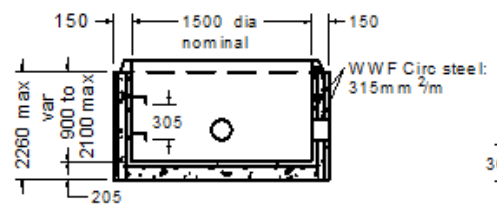
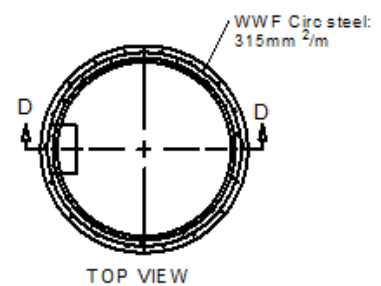
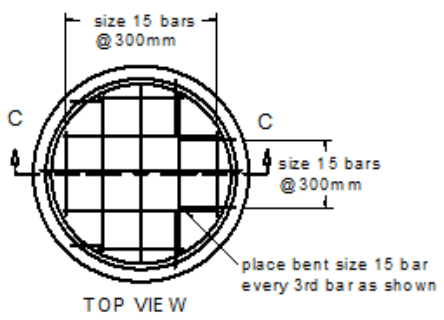
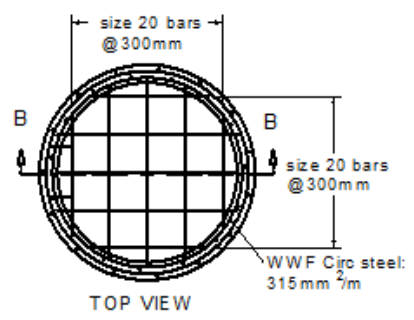
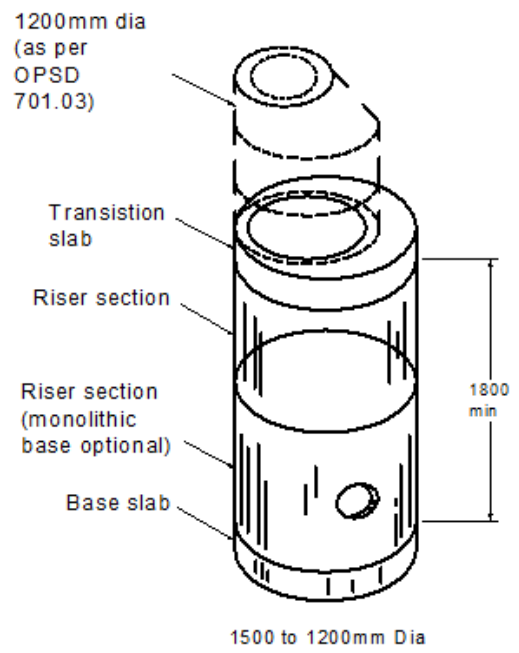
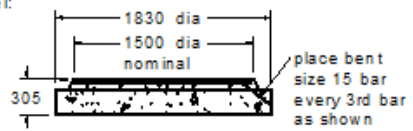


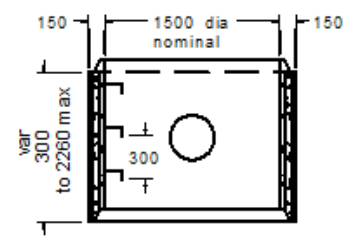
SECTION A-A  
TRANSITION SLAB



SECTION B-B  
MONOLITHIC BASE



SECTION C-C  
BASE SLAB



SECTION D-D  
RISER SECTION

## 1500mm DIA CONCRETE MANHOLE (MH1500)

### SPECIFICATIONS

ALL DIMENSIONS IN MILLIMETRES.

#### CONCRETE:

35 MPa @ 28 DAYS,  
5-8% AIR ENTRAINMENT IN ACCORDANCE  
WITH CSA A23.1 MOD-M90.

#### REINFORCING:

IN ACCORDANCE WITH CSA G30.18 & OPSS 1440.  
WELDED WIRE FABRIC TO CSA G30.5  
ALL REINFORCING STEEL HAS 30mm MIN. COVER.

#### NOTES:

MANUFACTURED IN ACCORDANCE WITH  
OPSD 701.011, 701.040 AND 701.041.  
MANUFACTURED IN ACCORDANCE WITH OPSS 1351.  
DESIGNED TO OHBD CODE CSA CAN 56.  
REINFORCING DETAILS AVAILABLE UPON REQUEST.



1645 SYDENHAM RD.  
KINGSTON, ONT.

PHONE:  
(800) 223-0012  
1-613-546-6683

www.anchorconcrete.com