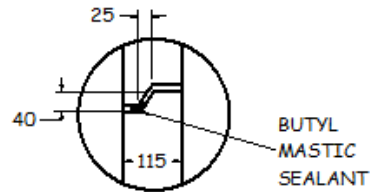
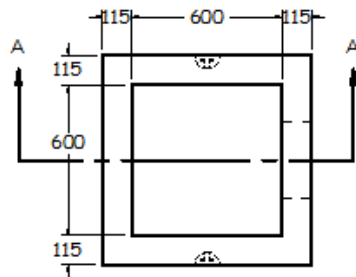


TOP VIEW
1:30



JOINT CROSS SECTION
(FOR 2-PC CATCHBASINS)

BUTYL
MASTIC
SEALANT

SPECIFICATIONS

ALL DIMENSIONS IN MILLIMETRES.

CONCRETE:

35 MPa @ 28 DAYS,
6% AIR ENTRAINMENT IN ACCORDANCE
WITH CSA A23.1 MOD-M90

REINFORCING:

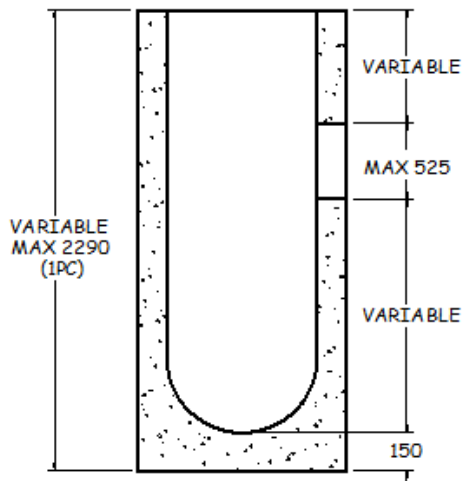
IN ACCORDANCE WITH OPSS 1440.
ALL REINFORCING STEEL HAS 30mm MIN. COVER

WEIGHT:

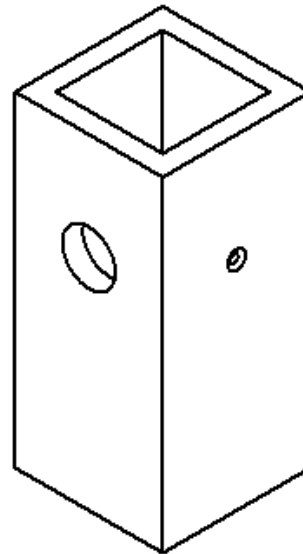
WALLS	-789 KG/V.M.
BASE	-130 KG

NOTES:

- PRODUCT MANUFACTURED TO O.P.S.D. 705.01.
- MANUFACTURED IN ACCORDANCE WITH OPSS 1351.
- REINFORCING IN ACCORDANCE WITH OPSD 705.010.
- ALL PIECES INCLUDE SWIFT LIFT LIFTING ANCHORS.
- OPTIONS AVAILABLE UPON REQUEST INCLUDE:
PIPE GASKETS
CAST-IN SUB-DRAIN COUPLERS
DRILLED WEEP HOLES.



SECTION A-A
1:30



ISOMETRIC VIEW
1:30

600x600 CATCHBASIN (CB0600)



1645 SYDENHAM RD.
KINGSTON, ONT.

PHONE:
(800) 223-0012
1-613-546-6683

www.anchorconcrete.com