

OPTIONS AVAILABLE UPON REQUEST INCLUDE:

DUCT TERMINATORS
 SUMP W/DRAIN
 CAST-IN CABLE RACKS
 CAST IRON EMBOSSED W/ ELECTRICAL OR
 COMMUNICATION

SPECIFICATIONS

ALL DIMENSIONS IN MILLIMETRES.

CONCRETE:

35 MPa @ 28 DAYS,
 6% AIR ENTRAINMENT IN ACCORDANCE
 WITH CSA A23.1 MOD-M90.

REINFORCING:

IN ACCORDANCE WITH CSA G30.18 & OPSS 1440.
 ALL REINFORCING STEEL HAS 30mm MIN. COVER.

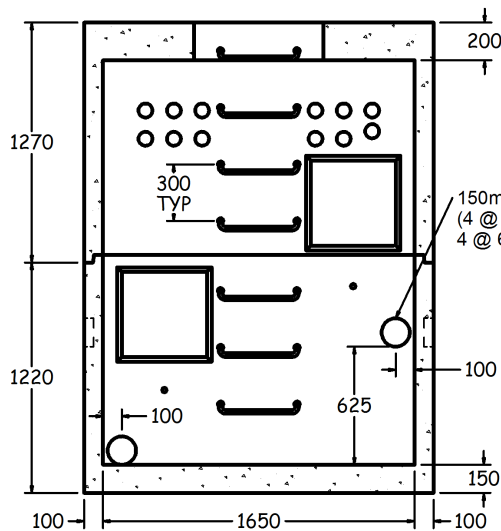
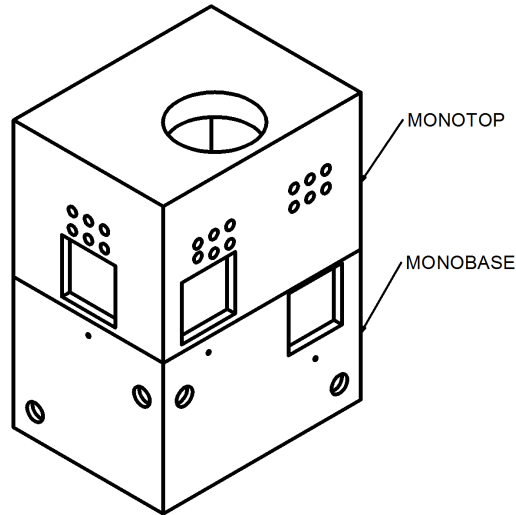
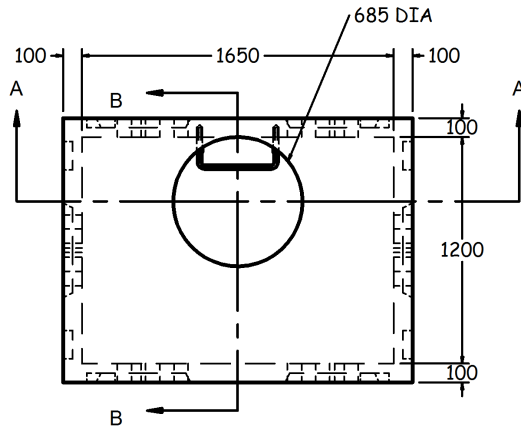
WEIGHT:

MONOBASE	-2.5 TONNES
MONOTOP	-2.5 TONNES

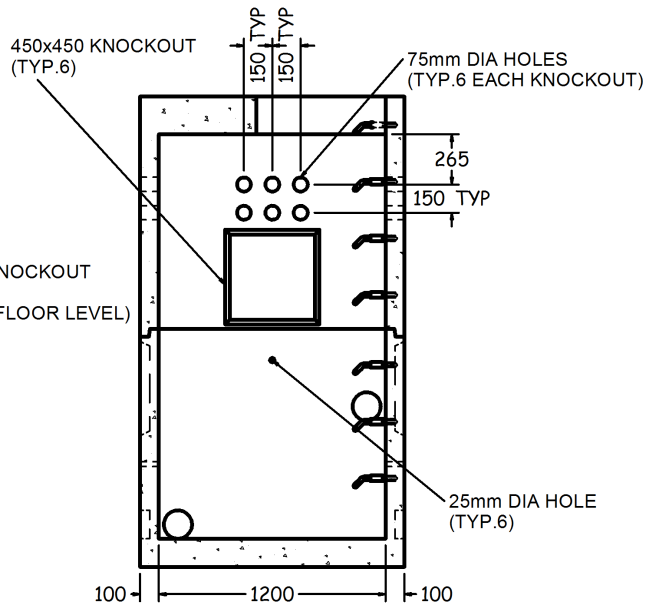
NOTES:

- PRODUCT MANUFACTURED TO C.H.B.D.C. LOADING.
- MANUFACTURED IN ACCORDANCE WITH OPSS 1351.
AND OPSD 2111.040.
- REINFORCING DETAILS AVAILABLE UPON REQUEST.
- ALL PIECES INCLUDE SWIFT LIFT LIFTING ANCHORS.
- INCLUDES SOLID ALUMINUM LADDER RUNGS
AS PER OPSD 405.020.

TOP VIEW
1:40



SECTION A-A
1:40



SECTION B-B
1:40

1200x1650mm ELECTRICAL MAINTENANCE HOLE (EL3000)



1645 SYDENHAM RD.
KINGSTON, ONT.

PHONE:
(800) 223-0012
1-613-546-6683

www.anchorconcrete.com