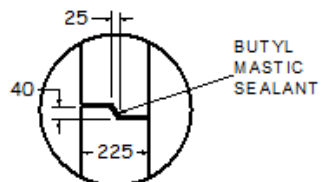
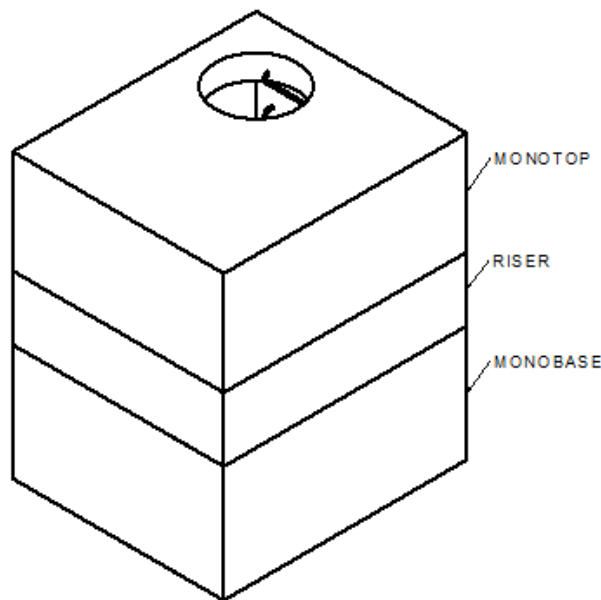


OPTIONS AVAILABLE UPON REQUEST INCLUDE:

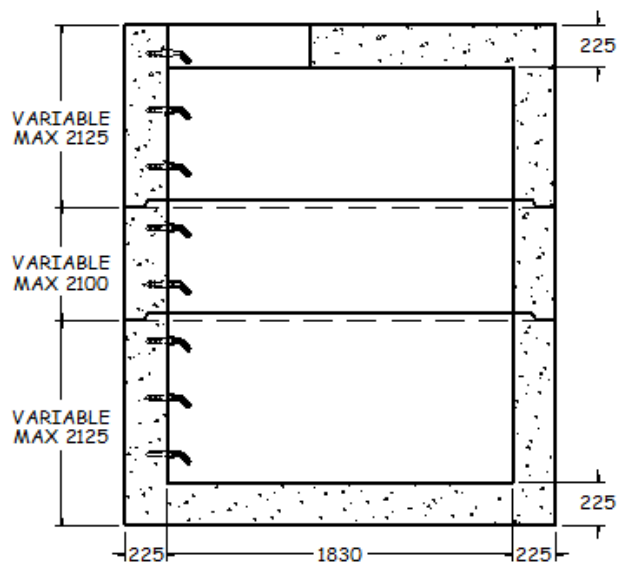
DUCT TERMINATORS  
SUMP W/DRAIN  
CAST-IN PULLING EYES  
CAST-IN CABLE RACKS  
CAST IRON EMBOSSED W/ ELECTRICAL OR  
COMMUNICATION



JOINT CROSS SECTION



ISOMETRIC VIEW  
1:50



SECTION A-A  
1:40

1525x1830 ELECTRICAL/COMMUNICATION MANHOLE (BM1500)

SPECIFICATIONS

ALL DIMENSIONS IN MILLIMETRES.

CONCRETE:

45 MPa @ 28 DAYS,  
5-8% AIR ENTRAINMENT IN ACCORDANCE  
WITH CSA A23.1 MOD-M90.

REINFORCING:

IN ACCORDANCE WITH CSA G30.18 & OPSS 1440.  
ALL REINFORCING STEEL HAS 30mm MIN. COVER.

WEIGHT:

WALLS	-3108 KG/V.M.
MONO BASE/TOP	-1510 KG
TOP SLAB	-2148 KG

NOTES:

PRODUCT MANUFACTURED TO C.H.B.D.C. LOADING.  
MANUFACTURED IN ACCORDANCE WITH OPSS 1351.  
REINFORCING DETAILS AVAILABLE UPON REQUEST.  
ALL PIECES INCLUDE SWIFT LIFT LIFTING ANCHORS.

ALL MAINTENANCE HOLES INCLUDE  
SOLID ALUMINUM LADDER RUNGS  
AS PER OPSD 405.020.

VARIABLE OPENINGS IN TOP SLAB  
AVAILABLE UPON REQUEST.

MAX. BURIAL DEPTH: 900mm.  
DEEP BURIAL DEPTHS AVAILABLE UPON REQUEST.

REFER TO DRAWING MH-3 FOR MAX. PIPE SIZES.  
PIPE GASKETS AVAILABLE UPON REQUEST.

REFER TO INSTALLATION GUIDELINES  
FOR BOX MANHOLES AND CHAMBERS.



1645 SYDENHAM RD.  
KINGSTON, ONT.

PHONE:  
(800) 223-0012  
1-613-546-6683

www.anchorconcrete.com