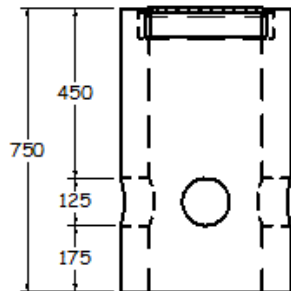
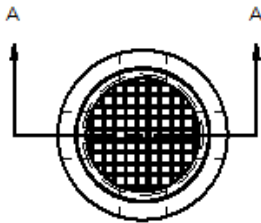
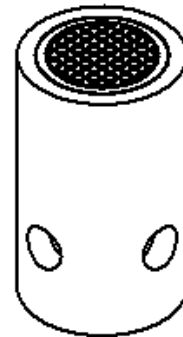


TOP VIEW  
1:20



SECTION A-A  
1:20



ISOMETRIC VIEW  
1:20

## SPECIFICATIONS

ALL DIMENSIONS IN MILLIMETRES.

### CONCRETE:

45 MPa @ 28 DAYS,  
6% AIR ENTRAINMENT IN ACCORDANCE  
WITH CSA A23.1 MOD-M90.

### REINFORCING:

IN ACCORDANCE WITH CSA G30.18 & OPSS 1440.  
ALL REINFORCING STEEL HAS 30mm MIN. COVER.

### WEIGHT:

172 KG

### NOTES:

MANUFACTURED IN ACCORDANCE WITH  
OPSD 2112.010.

REINFORCING DETAILS AVAILABLE UPON REQUEST.

**300 DIA. ELECTRICAL HANDHOLE, WITH COVER (EL1000)**



1645 SYDENHAM RD.  
KINGSTON, ONT.

PHONE:  
(800) 223-0012  
1-613-546-6683

[www.anchorconcrete.com](http://www.anchorconcrete.com)