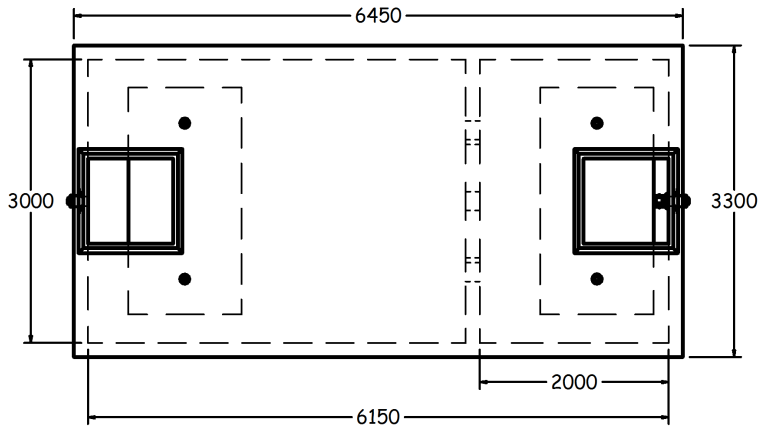
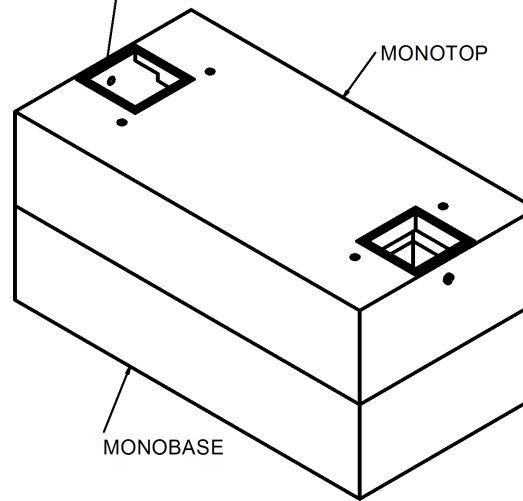


TOP VIEW
1:80



SEE "MODULAR TANK ACCESS" PAGE FOR ACCESS OPTIONS



SPECIFICATIONS

ALL DIMENSIONS IN MILLIMETRES.

NOM. CAPACITY:

9900 GALLONS (45000 LITRES) TO INVERT OF OUTLET.
98.6 GALLONS/IN. VERTICALLY.
17647 LITRES/M VERTICALLY.

CONCRETE:

45 MPa @ 28 DAYS,
5-8% AIR ENTRAINMENT IN ACCORDANCE
WITH CSA A23.1 MOD-M90

REINFORCING:

IN ACCORDANCE WITH CSA C30.18.
HEAVY DUTY VERSION DESIGNED TO CAN 56-06
(C.H.B.D.C.) AVAILABLE.
ALL REINFORCING STEEL HAS 30mm MIN. COVER.
REINFORCING DETAILS AVAILABLE UPON REQUEST.

BAFFLES:

INLET: PVC PLASTIC LOCKED INTO CONCRETE.

INLET & OUTLET:

POLYLOK TYPE III PIPE SEALS FOR
51 (2'), 76 (3") OR 102 (4") PIPE.

WEIGHT:

BOTTOM	-20500 KG
TOP SLAB	-20150 KG

NOTES:

MAX. BURIAL DEPTH: 610mm.
DEEP BURIAL TANKS AVAILABLE UPON REQUEST.

ACCESS OPTIONS AVAILABLE.

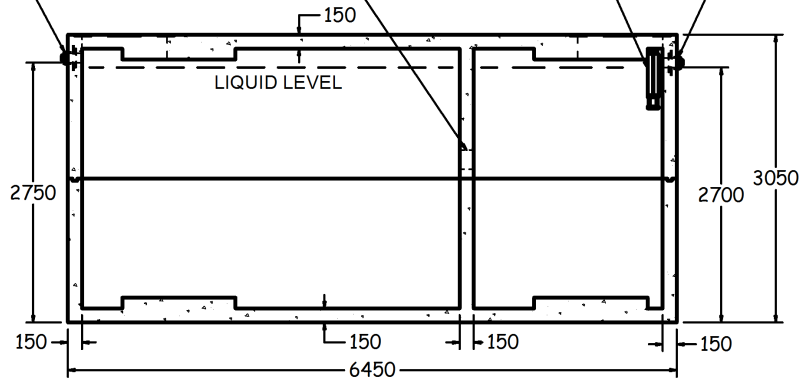
ABOVE GROUND INSTALLATION NOT PERMITTED.
REFER TO INSTALLATION GUIDELINES FOR TANKS.

150 DIA KNOCKOUTS FOR
HOLDING TANK APPLICATIONS
(TYP.3)

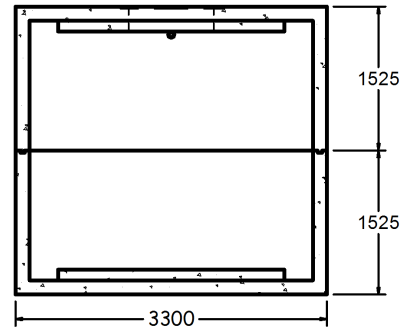
EFFLUENT FILTER

INLET

OUTLET



SIDE SECTION
1:80



END SECTION
1:80

9900 GAL SEPTC TANK (ST3000)



1645 SYDENHAM RD.
KINGSTON, ONT.

PHONE:
(800) 223-0012
1-613-546-6683

www.anchorconcrete.com