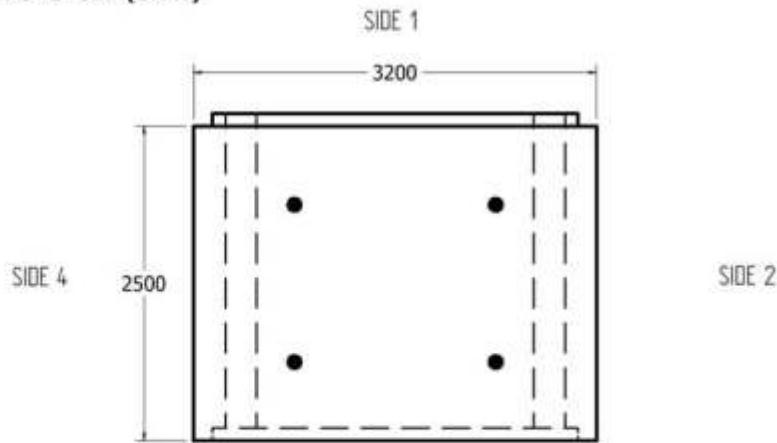


**PRODUCTION DRAWING - PC "C" STD (ONLY)**

TOP VIEW  
1:60

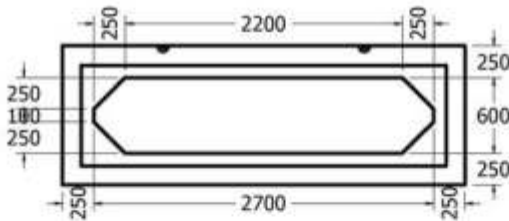


**TOLERANCES:**

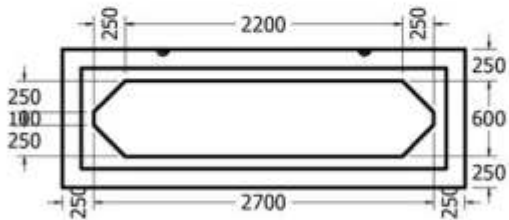
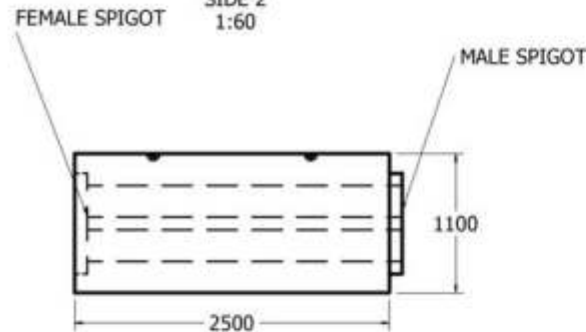
SPAN/RISE : +/- 20mm  
 HAUNCH : +/- 8mm  
 SLAB/WALL THICKNESS : +/- 5mm  
 LENGTH : +/- 15mm

VARIATION IN LENGTHS OF TWO  
 OPPOSITE SURFACES OF THE BOX  
 SHALL NOT EXCEED +/- 10mm

SIDE 1  
1:60

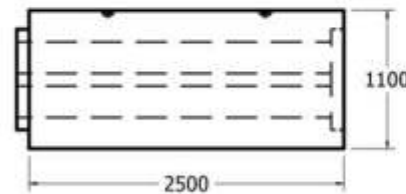


SIDE 2  
1:60



SIDE 3  
1:60

SIDE 4  
1:60



SIZE:	2700x600x250mm WALL	
NAME:	CULVERT 57-1	
WEIGHT:	12.1 tonne	
JOB ORDER #:		
SALES ORDER #	7936	
CUSTOMER:		
PROJECT:		
OWNER:		
ENGINEER:		

SALES REP:		
CONTRACT DUE DATE:		
Q.C. CHECKS	DATE	INITIALS
PRE POUR		
POST POUR		

CONCRETE: **45 MPA** @ 28 DAYS,  
 5-7% AIR ENT. AS PER CSA A23.4-00  
 REINFORCING: IN ACCORDANCE WITH CSA  
 G30.18(REBAR = 40mm +/- 5mm COVER)

BILL OF MATERIALS:  
 PC B - 6 x 4 -TONNE SWIFT LIFTS x 3.5"  
 (P00055)

NOTES: QTY: 6  
 PRODUCT SHOULD BE LAID ON ITS SIDE  
 FOR SHIPPING

DRAWN BY:	
CHECKED BY:	
REVISION:	



1645 SYDENHAM RD  
 KINGSTON, ONT.  
 PHONE:  
 (800) 223-0012  
 1-613-546-6683

www.anchorconcrete.com