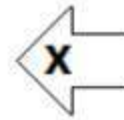
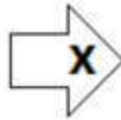
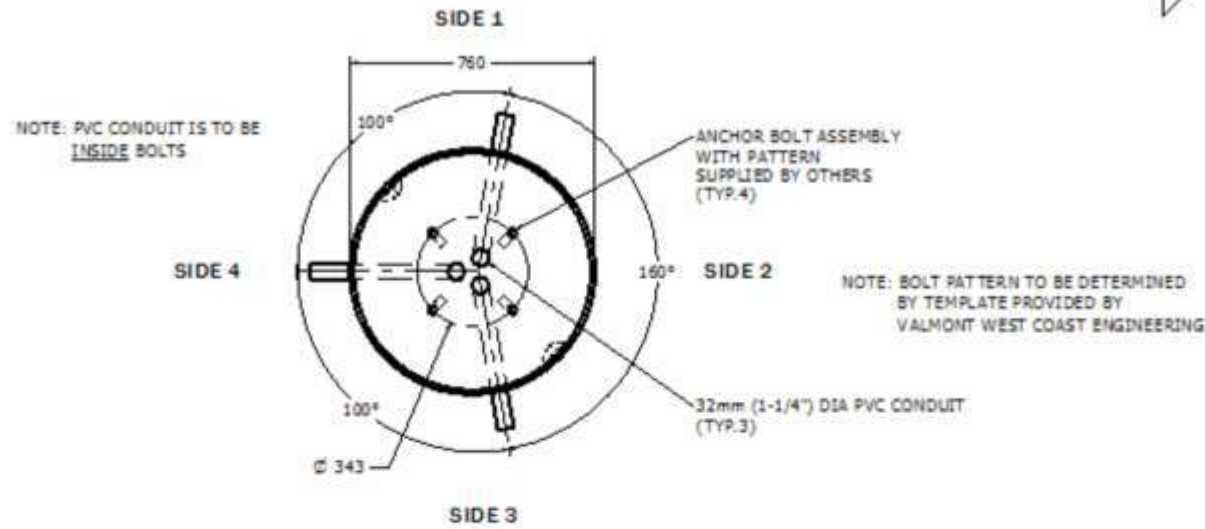
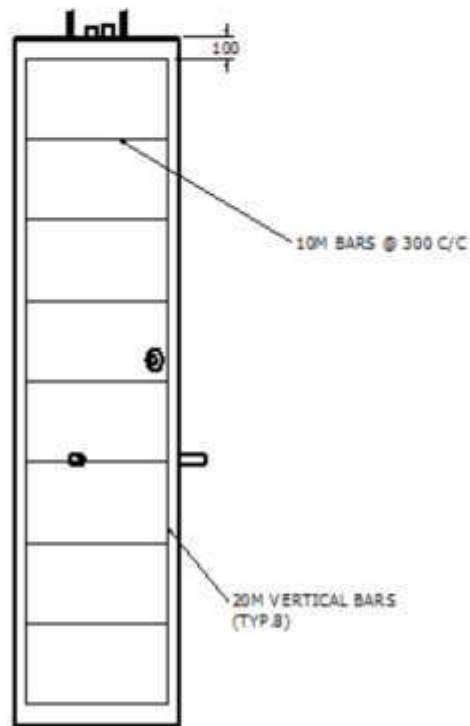


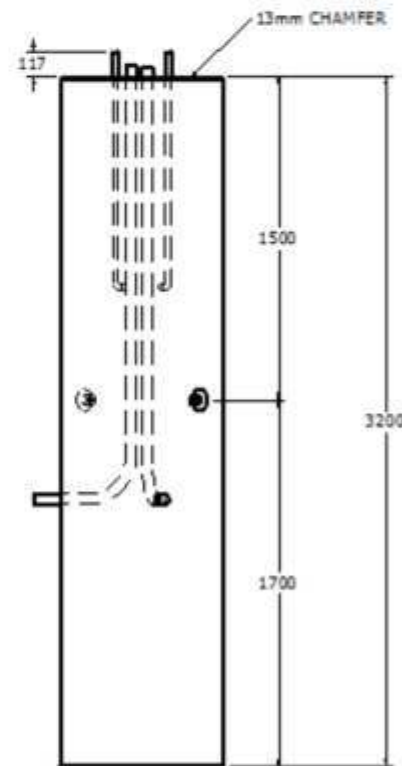
TOP VIEW  
1:20



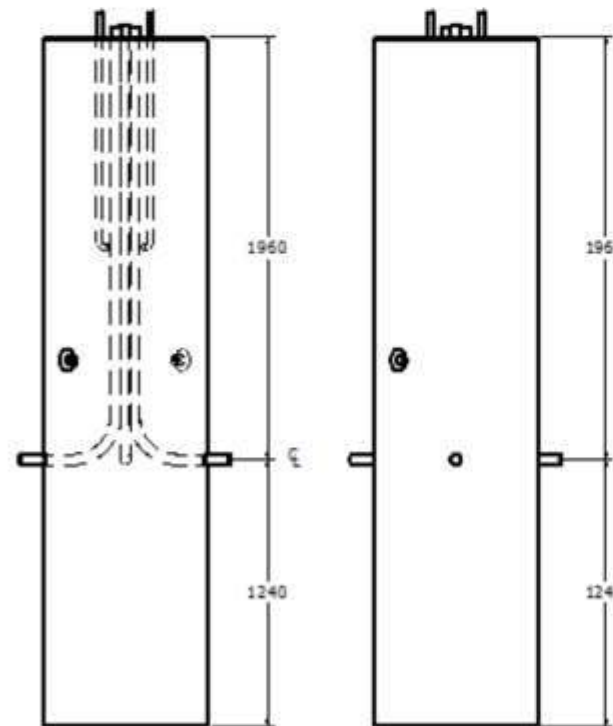
ISOMETRIC VIEW  
1:30



SIDE 1  
1:30




SIDE 3  
1:30



SIDE 2  
1:30

SIDE 4  
1:30

SIZE:		
NAME:		
WEIGHT:	A 3.5 tonne	B
	C	D
JOB ORDER #:		
SALES ORDER #: 6706		
CUSTOMER:		
PROJECT:		
OWNER:		
ENGINEER:		
SALES REP:		
CONTRACT DUE DATE:		
Q.C. CHECKS	DATE	INITIALS
POST POUR		
YARD		
CONCRETE: 35 MPA @ 28 DAYS, 5-7% AIR ENT. AS PER CSA A23.4-00		
REINFORCING: IN ACCORDANCE WITH CSA G30.18 (ALL REBAR HAS 30mm COVER)		
DESIGNED AND MANUFACTURED TO:		
BILL OF MATERIALS:		
CAST-IN:		
3 - 32mm PVC CONDUIT		
2 - 4 TONNIE SWIFT LIFTS 7-1/8" (P00061)		
4 - ANCHOR BOLTS (SUPPLIED BY OTHERS)		
MISC. ACCESSORIES		
NOTES:		
USE SONOTUBE FOR FORMWORK CONCRETE WILL HAVE SLIGHT SPIRAL PATTERN		
QTY: 16 UNITS		
DRAWN BY:		
CHECKED BY:		
REVISION: C.S. 10/26/09, C.S. 11/09/09, C.S. 11/10/09, C.S. 11/16/09		
		1645 SYDENHAM RD. KINGSTON, ONT. PHONE: (800) 223-0012 1-613-546-6683
www.anchorconcrete.com		