

- NOTES:**
- ALL DIMENSIONS IN MILLIMETERS UNLESS OTHERWISE STATED.
- NOT TO SCALE
- WEIGHT: 13.1 TONNES
- THIS STRUCTURE HAS BEEN DESIGNED TO SUPPORT LOADS SPECIFIED IN THE N.B.C.C 2015
- STEEL REINFORCED WALLS, ROOF, AND BASE
- DELIVERED AND PLACED AS ONE PIECE, INSTALLATION BY CRANE AVAILABLE UPON REQUEST
- INSTALL BUILDING ON PREPARED BASE (BY OTHERS)
- PRODUCED WITHOUT A JOINT IN BETWEEN THE ROOF AND WALLS FOR SUPERIOR WEATHER PROTECTION
- EXPOSED AGGREGATE FINISH
- CONTAINS TWO WEATHER RESISTANT ALUMINUM VENTS
- COATED WITH GRAFFITI GUARD
- 16 GAUGE STEEL DOORS & FRAME
- TWO EXTERIOR DOORS, ONE ACTIVE DOOR, ONE NON-ACTIVE DOOR AND ONE INTERIOR DOOR, EDGE WELDED, 44MM THICK, STEEL STIFFENED AND PAINTED BROWN
- EXTERIOR DOORS INCLUDE HIGH QUALITY DEADBOLT LOCK, FINGER PULL, ASTRAGAL, SPRING-SOFTENED CHAIN CHECKS, DOOR SWEEP, AND RAIN DRIP EDGE
- NON-ACTIVE DOOR HAS TOP AND BOTTOM PAD BOLTS
- INTERIOR FEATURES
- INTERIOR DOOR INCLUDES HIGH QUALITY DEADBOLT LOCK, FINGER PULL, ALUMINUM THRESHOLD PLATE
- INTERIOR 2"x4" STUD DIVIDER WALL WITH RIGID INSULATION
- BACK ROOM WALLS & ROOF ALSO COVERED WITH STUDS AND RIGID INSULATION
- DIVIDER AND BACK ROOM WALLS COVERED WITH PLYWOOD AND PAINTED WHITE
- THREE 150MM DIAMETER FLOOR DRAINS IN BACK ROOM
- ANCHOR CONCRETE PRODUCTS LTD. ASSUMES NO LIABILITY FOR ANY SITE CONDITIONS. ALL DETAILS RELATED TO STABILITY OF FOUNDING CONDITIONS, EXCAVATIONS DEWATERING, BACKFILL, GEOMETRY, AND ASSOCIATED WORKS ARE THE SOLE RESPONSIBILITY OF THE GENERAL CONTRACTOR AND OR OWNER. A QUALIFIED GEOTECHNICAL ENGINEER IS TO BE RETAINED TO ASSESS SITE CONDITIONS AND VERIFY FOUNDING CONDITIONS.
- ALL LIFTING ANCHORS ARE TO BE DAYTON SUPERIOR OR APPROVED ALTERNATIVE. ALL RIGGING, HOISTING, AND LIFTING TO BE IN STRICT ACCORDANCE WITH DAYTON SUPERIOR MANUAL.

SPECIFICATIONS:
PRODUCT DESIGNED IN ACCORDANCE WITH CSA A23.3

PRODUCTION:
IN ACCORDANCE WITH CSA A23.4

CONCRETE:
IN ACCORDANCE WITH CSA A23.1
EXPOSURE CLASS: C1, 28 DAY COMP. STRENGTH: 35MPA, AIR ENTRAINMENT 5-8%

REINFORCING:
IN ACCORDANCE WITH WITH CSA G30.18

REDICAST 10 - RINK BUILDING

DRAWN BY:
JS

DATE:
AUG 2023

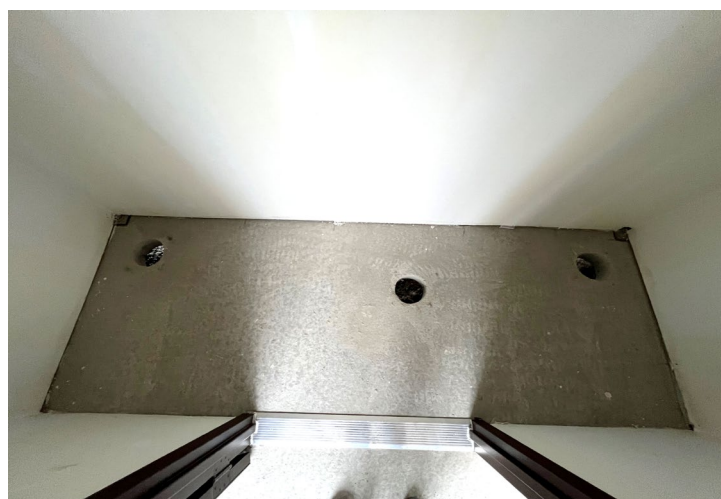


1645 SYDENHAM RD.
KINGSTON, ON

PHONE:
(800) 223-0012
1-613-546-6683

WWW.ANCHORCONCRETE.COM

REDICASTTMRINK



Anchor Concrete Products - Kingston Ontario - www.AnchorConcrete.com