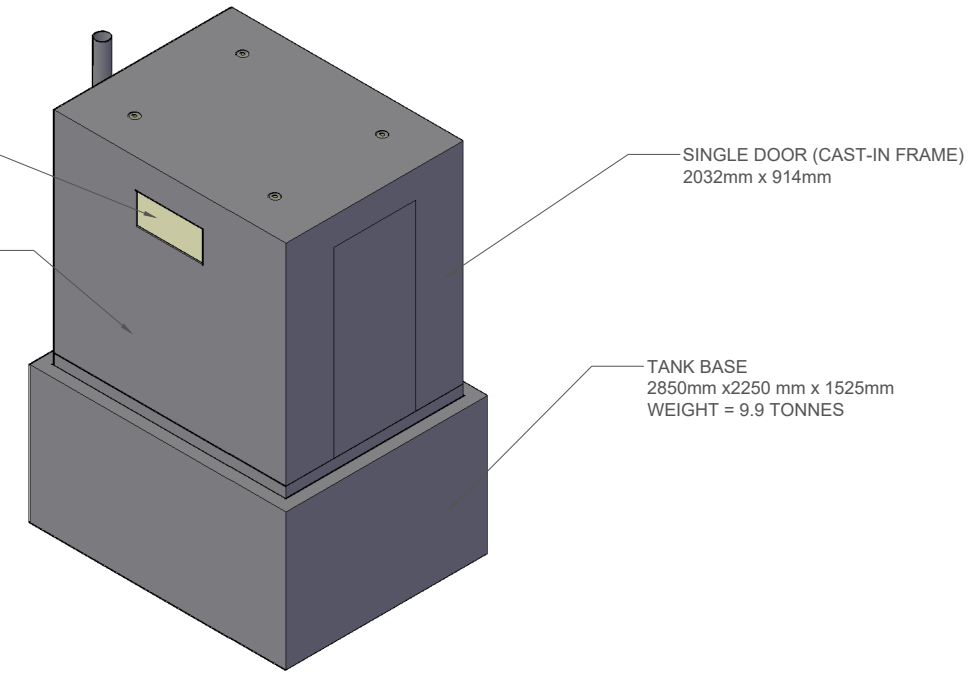
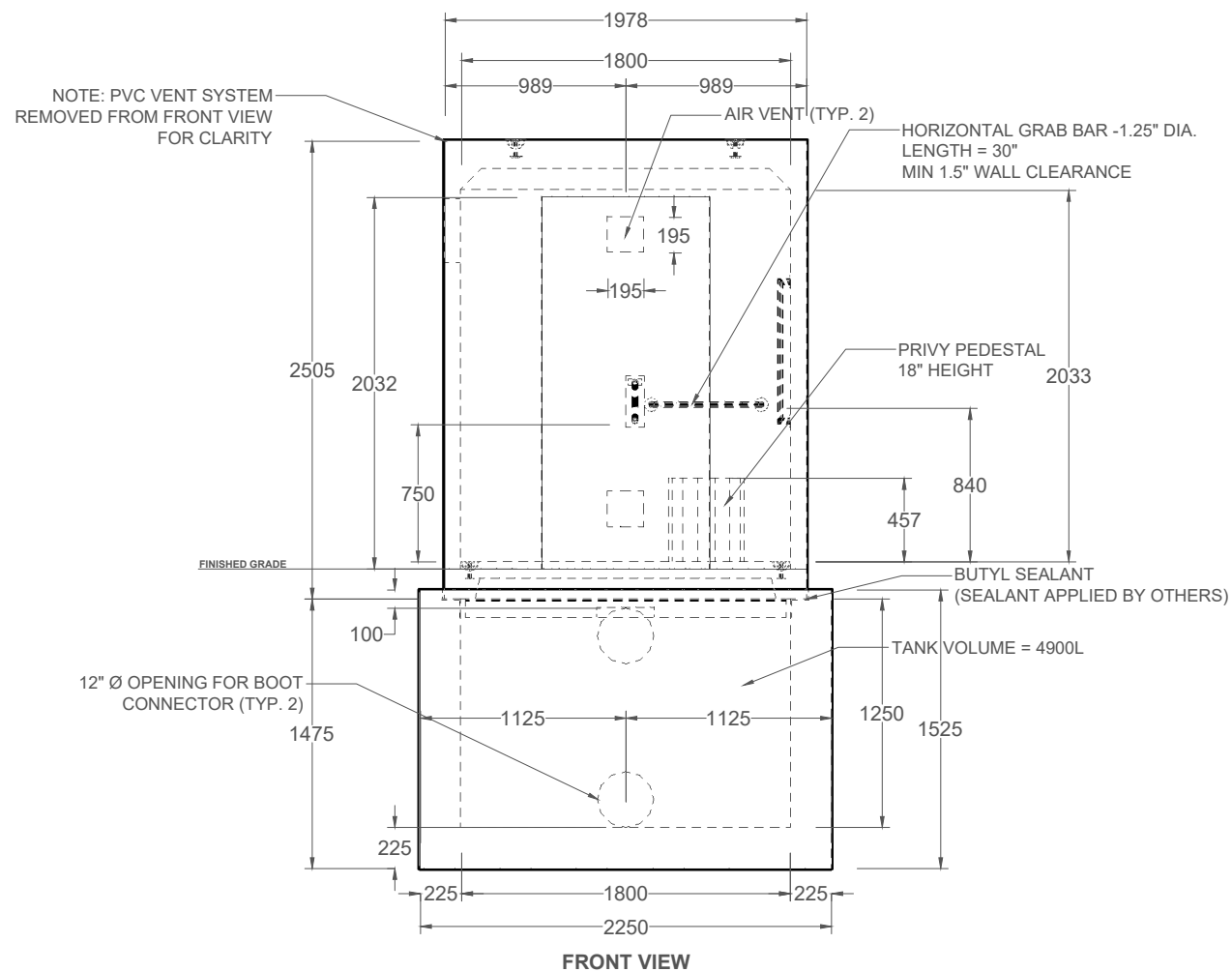


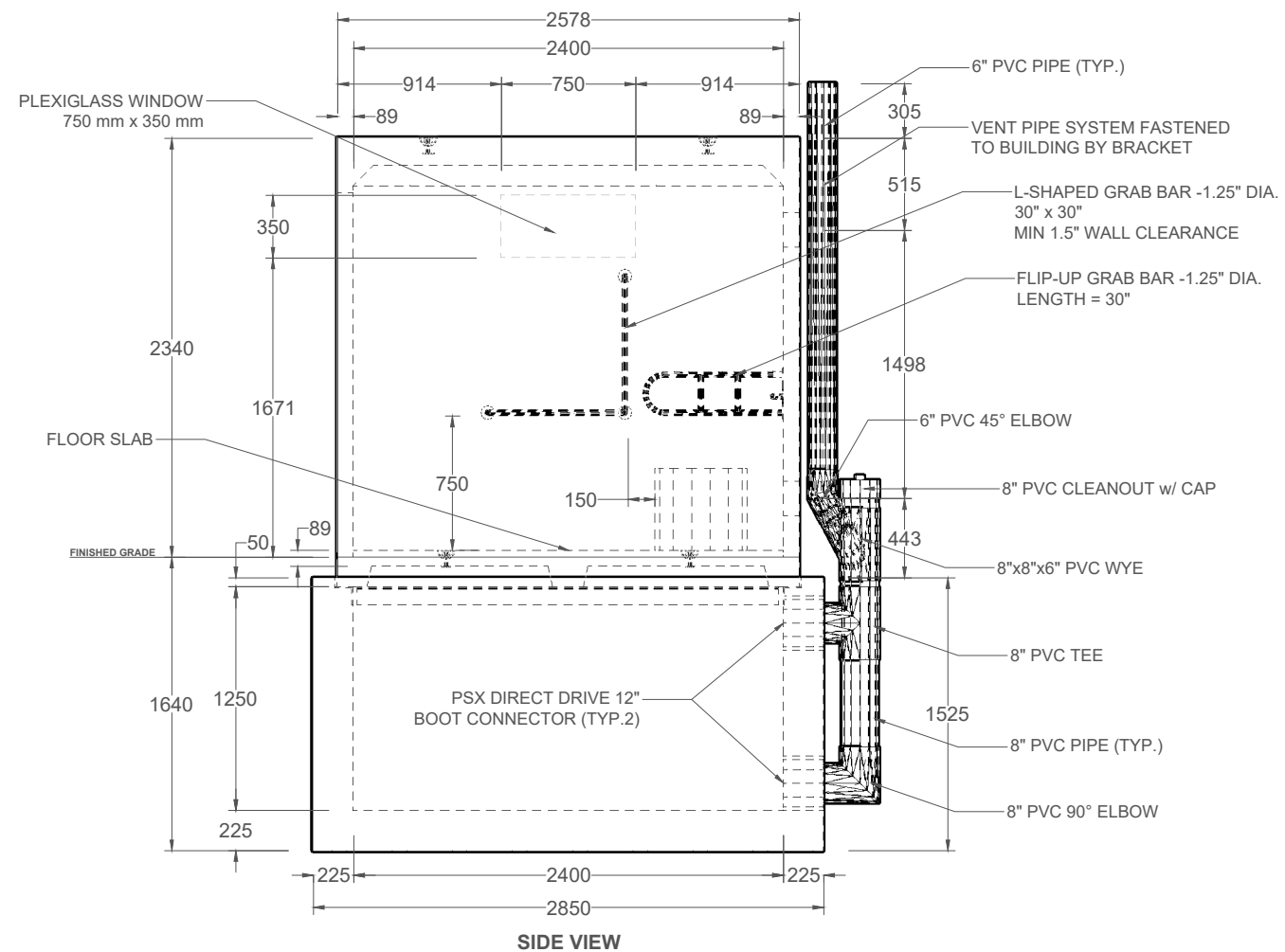
TOP VIEW



ISOMETRIC VIEW



FRONT VIEW



SIDE VIEW

**NOTES:**

ALL DIMENSIONS IN MILLIMETERS UNLESS OTHERWISE SPECIFIED.

NOT TO SCALE

EXPOSED AGGREGATE FINISH ON TOP COMPONENT

ALL LIFTING ANCHORS ARE TO BE DAYTON SUPERIOR OR APPROVED ALTERNATIVE. ALL RIGGING, HOISTING, AND LIFTING TO BE IN STRICT ACCORDANCE WITH DAYTON SUPERIOR MANUAL.

APPROXIMATE FINISHED GRADE AS SHOWN.

PRECAST PRIVY INSTALLED AND ASSEMBLED ON-SITE BY OTHERS. PIECES SHIPPED AS SEPARATE COMPONENTS.

PVC VENT COMPONENTS INSTALLED BY OTHERS.

GRAB BARS AND TOILET STEM MEET STANDARDS FOR ACCESSIBILITY AS PER SPECIFICATIONS OUTLINED IN BUILDING CODE 2024 3.8.3.8.

PRECAST PRIVY BUILDING ASSEMBLY = 7.5 TONNES

TANK BASE = 9.9 TONNES

**SPECIFICATIONS:**  
 PRODUCT DESIGNED IN ACCORDANCE WITH CSA A23.3

**PRODUCTION:**  
 IN ACCORDANCE WITH CSA A23.4

**CONCRETE:**  
 IN ACCORDANCE WITH CSA A23.1  
 EXPOSURE CLASS: C1, 28 DAY COMP. STRENGTH: 35MPA, AIR ENTRAINMENT 5-8%

# PRECAST PRIVY 4900L CAPACITY

DRAWN BY:  
 KC

DATE:  
 JAN 2025



1645 SYDENHAM RD.  
 KINGSTON, ON

PHONE:  
 (800) 223-0012  
 1-613-546-6683

WWW.ANCHORCONCRETE.COM